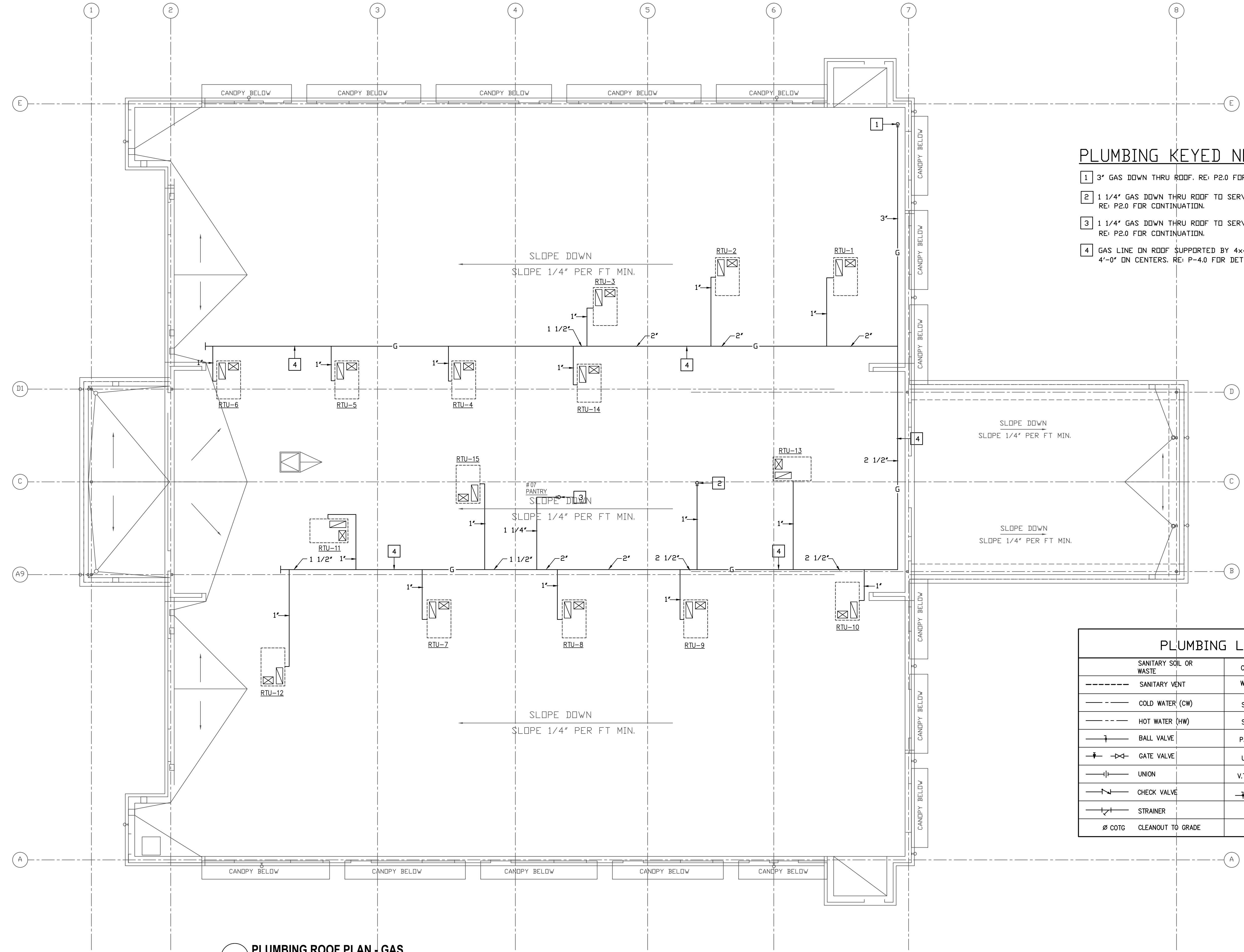


REVISIONS AND ISSUANCE		
NO.	DATE	DESCRIPTION
08/13/2018	PRICING	



**PLUMBING KEYED NOTES:**

- 1 3" GAS DOWN THRU ROOF. RE: P2.0 FOR CONTINUATION.
- 2 1 1/4" GAS DOWN THRU ROOF TO SERVE WATER HEATER. RE: P2.0 FOR CONTINUATION.
- 3 1 1/4" GAS DOWN THRU ROOF TO SERVE RANGE/OVEN. RE: P2.0 FOR CONTINUATION.
- 4 GAS LINE ON ROOF SUPPORTED BY 4x4 REDWOOD BLOCKS 4'-0" ON CENTERS. RE: P-4.0 FOR DETAIL.

PLUMBING LEGEND		
	SANITARY SOIL OR WASTE	C.O. CLEAN OUT
	SANITARY VENT	W.H. WALL HYDRANT
	COLD WATER (CW)	S.P. SPRINKLER PIPE
	HOT WATER (HW)	S.S. SUB SURFACE DRAINAGE
	BALL VALVE	P.I.V. POST INDICATOR VALVE
	GATE VALVE	U.H. UNIT HEATER
	UNION	V.T.R. VENT THRU ROOF
	CHECK VALVE	PRESSURE GAUGE W/ GAUGE COCK
	STRAINER	
	∅ COTG CLEANOUT TO GRADE	

**1 PLUMBING ROOF PLAN - GAS**  
1/8" = 1'-0"

**IVY KIDS EARLY LEARNING CENTER**  
 4434 CR 94  
 Manvel, Tx 77578

MEP Consultants  
 BLK Engineering & Consulting Co.  
 3423 Spring Arbor Ln.  
 Sugar Land, TX 77479  
 (t) 832 563 3127  
 TBPE Firm #12672

THESE DOCUMENTS ARE FOR INTERIM REVIEW AND NOT FOR CONSTRUCTION, BIDDING OR PERMIT PURPOSES.

RESPONSIBLE ENGINEER:  
 CHIH-TAI KENG  
 79201  
 08-13-2018

DRAWING TITLE  
**PLUMBING ROOF PLAN - GAS**

DRAWN BY FK	CHECKED BY CK
DATE 03/30/2017	JOB NO. sedona lakes
DRAWING NO. <b>P-3.0</b>	