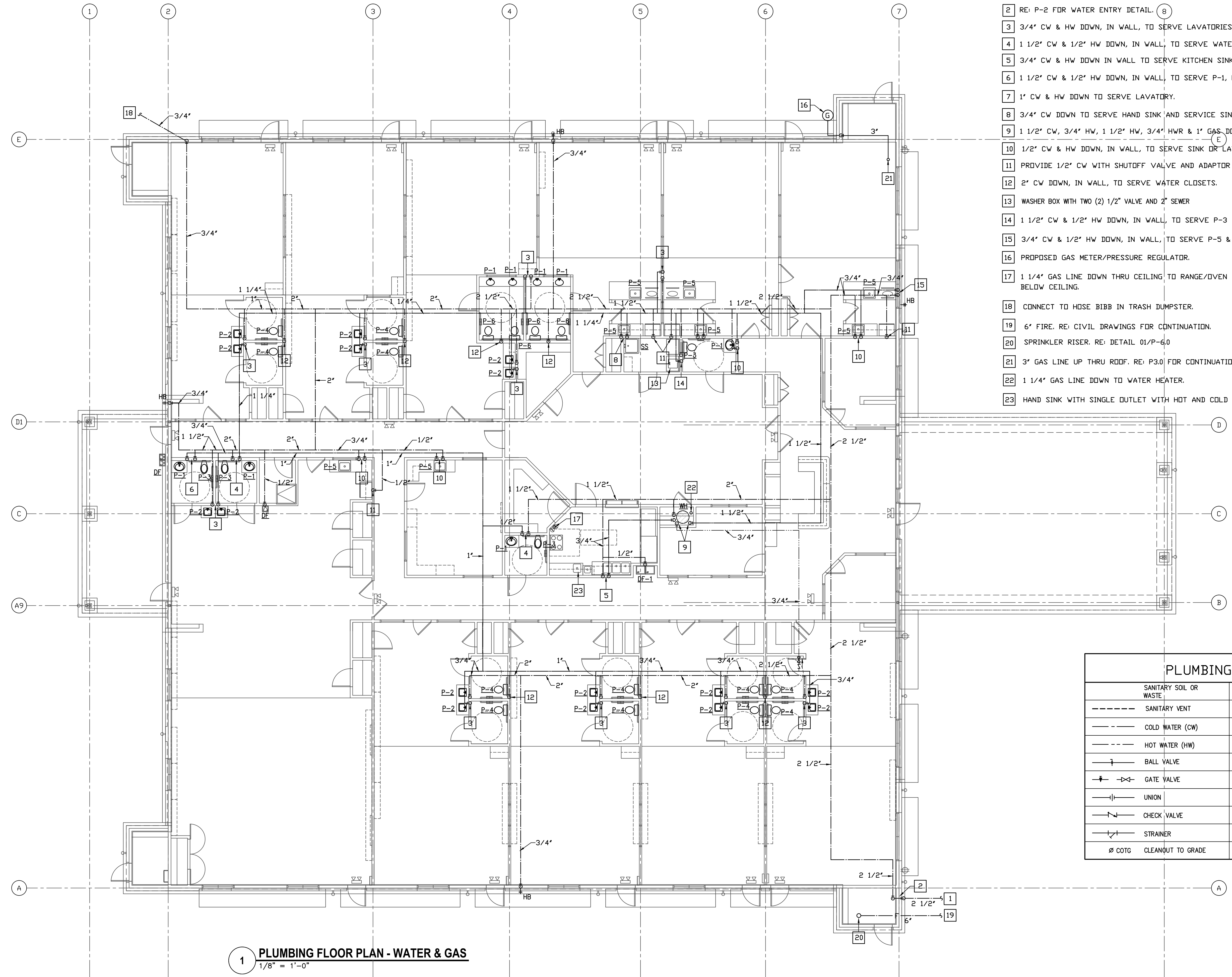


| REVISIONS AND ISSUANCE | | |
|------------------------|------------|-------------|
| NO. | DATE | DESCRIPTION |
| | 08/13/2018 | PRICING |

PLUMBING KEYED NOTES:

- 1 2 1/2" CW TO WATER METER. RE: CIVIL SITE PLAN FOR CONTINUATION.
- 2 RE: P-2 FOR WATER ENTRY DETAIL. (8)
- 3 3/4" CW & HW DOWN, IN WALL, TO SERVE LAVATORIES OR SINKS.
- 4 1 1/2" CW & 1/2" HW DOWN, IN WALL, TO SERVE WATER CLOSET & LAVATORY.
- 5 3/4" CW & HW DOWN IN WALL TO SERVE KITCHEN SINKS AND HAND SINK.
- 6 1 1/2" CW & 1/2" HW DOWN, IN WALL, TO SERVE P-1, P-3 & DF-1.
- 7 1" CW & HW DOWN TO SERVE LAVATORY.
- 8 3/4" CW DOWN TO SERVE HAND SINK AND SERVICE SINK.
- 9 1 1/2" CW, 3/4" HW, 1 1/2" HW, 3/4" HWR & 1" GAS DOWN TO WATER HEATER.
- 10 1/2" CW & HW DOWN, IN WALL, TO SERVE SINK OR LAVATORY.
- 11 PROVIDE 1/2" CW WITH SHUTOFF VALVE AND ADAPTOR TO SERVE ICE-MAKER.
- 12 2" CW DOWN, IN WALL, TO SERVE WATER CLOSETS.
- 13 WASHER BOX WITH TWO (2) 1/2" VALVE AND 2" SEWER
- 14 1 1/2" CW & 1/2" HW DOWN, IN WALL, TO SERVE P-3 & WASHER.
- 15 3/4" CW & 1/2" HW DOWN, IN WALL, TO SERVE P-5 & HB.
- 16 PROPOSED GAS METER/PRESSURE REGULATOR.
- 17 1 1/4" GAS LINE DOWN THRU CEILING TO RANGE/DVEN WITH AUTO. SHUTOFF BELOW CEILING.
- 18 CONNECT TO HOSE BIBB IN TRASH DUMPSTER.
- 19 6" FIRE. RE: CIVIL DRAWINGS FOR CONTINUATION.
- 20 SPRINKLER RISER. RE: DETAIL 01/P-6.0
- 21 3" GAS LINE UP THRU ROOF. RE: P3.0 FOR CONTINUATION.
- 22 1 1/4" GAS LINE DOWN TO WATER HEATER.
- 23 HAND SINK WITH SINGLE OUTLET WITH HOT AND COLD WATER.



| PLUMBING LEGEND | | |
|------------------------|--------|------------------------------|
| SANITARY SOIL OR WASTE | C.O. | CLEAN OUT |
| SANITARY VENT | W.H. | WALL HYDRANT |
| COLD WATER (CW) | S.P. | SPRINKLER PIPE |
| HOT WATER (HW) | S.S. | SUB SURFACE DRAINAGE |
| BALL VALVE | P.I.V. | POST INDICATOR VALVE |
| GATE VALVE | U.H. | UNIT HEATER |
| UNION | V.T.R. | VENT THRU ROOF |
| CHECK VALVE | | PRESSURE GAUGE W/ GAUGE COCK |
| STRAINER | | |
| Ø COTG | | CLEANOUT TO GRADE |

1 PLUMBING FLOOR PLAN - WATER & GAS
1/8" = 1'-0"

IVY KIDS EARLY LEARNING CENTER
 4434 CR 94
 Manvel, Tx 77578

MEP Consultants
 BLK Engineering & Consulting Co.
 3423 Spring Arbor Ln.
 Sugar Land, TX 77479
 (t) 832 563 3127
 TBPE Firm #12672

THESE DOCUMENTS ARE FOR INTERIM REVIEW AND NOT FOR CONSTRUCTION, BIDDING OR PERMIT PURPOSES.
 RESPONSIBLE ENGINEER:
 CHH-TAI KENG
 79201
 08-13-2018

DRAWING TITLE
PLUMBING FLOOR PLAN - WATER & GAS
 DRAWN BY: FK
 CHECKED BY: CK
 DATE: 03/30/2017
 JOB NO: sedona lakes
 DRAWING NO: **P-2.0**