

**GENERAL NOTES**

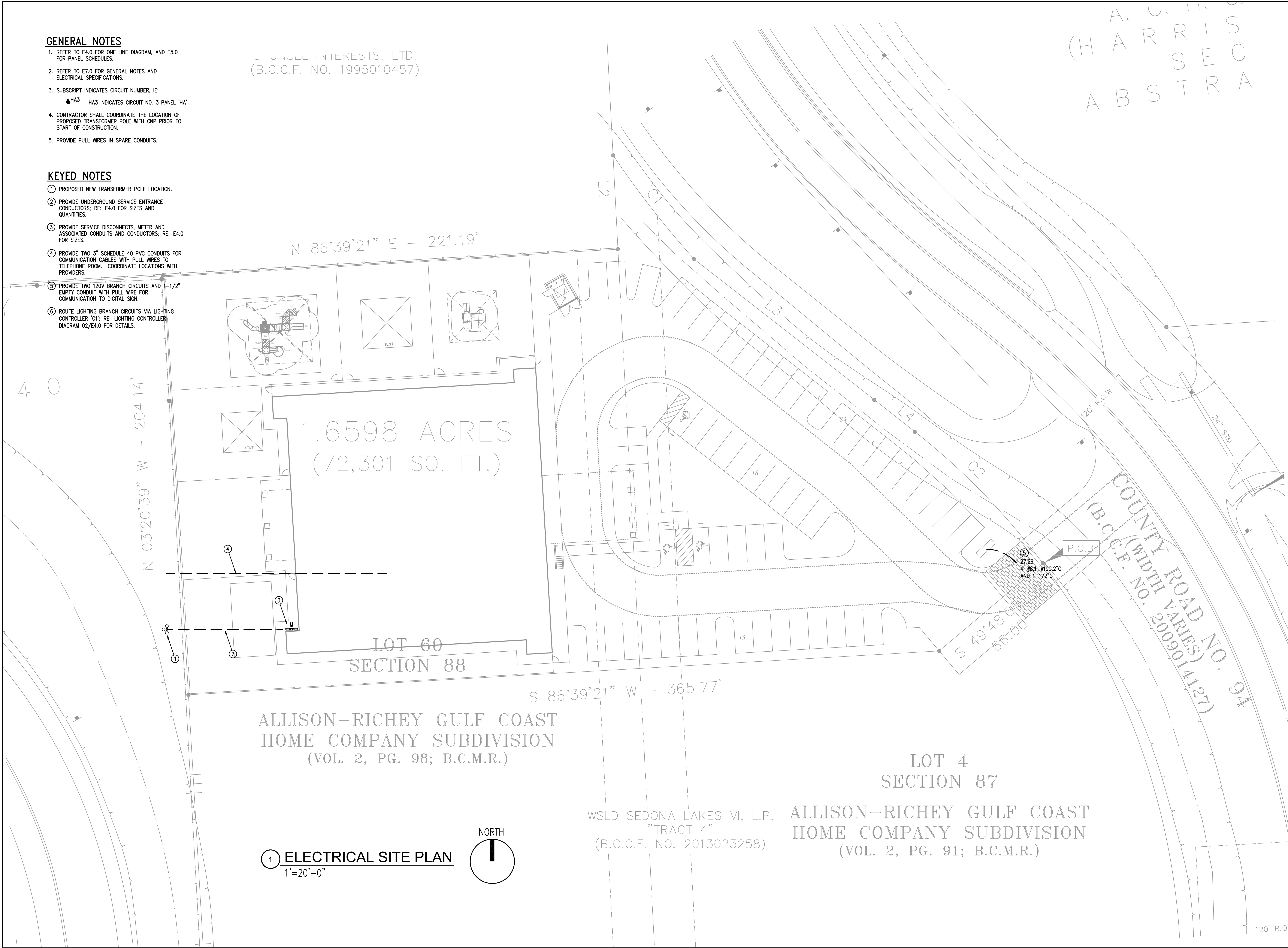
- REFER TO E4.0 FOR ONE LINE DIAGRAM, AND E5.0 FOR PANEL SCHEDULES.
- REFER TO E7.0 FOR GENERAL NOTES AND ELECTRICAL SPECIFICATIONS.
- SUBSCRIPT INDICATES CIRCUIT NUMBER, IE:  
 ●HA3 HA3 INDICATES CIRCUIT NO. 3 PANEL 'HA'
- CONTRACTOR SHALL COORDINATE THE LOCATION OF PROPOSED TRANSFORMER POLE WITH CNP PRIOR TO START OF CONSTRUCTION.
- PROVIDE PULL WIRES IN SPARE CONDUITS.

**KEYED NOTES**

- PROPOSED NEW TRANSFORMER POLE LOCATION.
- PROVIDE UNDERGROUND SERVICE ENTRANCE CONDUCTORS; RE: E4.0 FOR SIZES AND QUANTITIES.
- PROVIDE SERVICE DISCONNECTS, METER AND ASSOCIATED CONDUITS AND CONDUCTORS; RE: E4.0 FOR SIZES.
- PROVIDE TWO 3" SCHEDULE 40 PVC CONDUITS FOR COMMUNICATION CABLES WITH PULL WIRES TO TELEPHONE ROOM. COORDINATE LOCATIONS WITH PROVIDERS.
- PROVIDE TWO 120V BRANCH CIRCUITS AND EMPTY CONDUIT WITH PULL WIRE FOR COMMUNICATION TO DIGITAL SIGN.
- ROUTE LIGHTING BRANCH CIRCUITS VIA LIGHTING CONTROLLER 'CI'; RE: LIGHTING CONTROLLER DIAGRAM 02/E4.0 FOR DETAILS.

WORLDWIDE INTERESTS, LTD.  
(B.C.C.F. NO. 1995010457)

A. U. H. S. C.  
(HARRIS) S E C A  
A B S T R A



N 86°39'21" E - 221.19'

N 03°20'39" W - 204.14'

1.6598 ACRES  
(72,301 SQ. FT.)

LOT 60  
SECTION 88

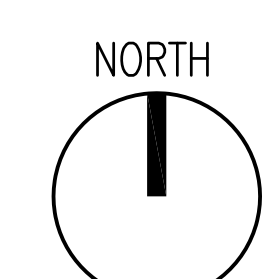
S 86°39'21" W - 365.77'

ALLISON-RICHEY GULF COAST  
HOME COMPANY SUBDIVISION  
(VOL. 2, PG. 98; B.C.M.R.)

WSLD SEDONA LAKES VI, L.P.  
"TRACT 4"  
(B.C.C.F. NO. 2013023258)

LOT 4  
SECTION 87  
ALLISON-RICHEY GULF COAST  
HOME COMPANY SUBDIVISION  
(VOL. 2, PG. 91; B.C.M.R.)

1 ELECTRICAL SITE PLAN  
1"=20'-0"



REVISIONS AND ISSUANCE		
NO.	DATE	DESCRIPTION
1	08/13/2018	PRICING

IVY KIDS EARLY LEARNING CENTER  
4434 CR 94  
Manvel, Tx 77578

MEP Consultants  
BLK Engineering & Consulting Co.  
3423 Spring Arbor Ln.  
Sugar Land, TX 77479  
(1) 832 563 3127  
TBPE Firm #12672

THESE DOCUMENTS ARE  
FOR INTERIM REVIEW AND NOT  
FOR CONSTRUCTION, BIDDING  
OR PERMIT PURPOSES.  
RESPONSIBLE ENGINEER:  
CHH-TAI KENG  
79201  
08-13-2018

DRAWING TITLE	
ELECTRICAL SITE PLAN	
DRAWN BY FK	CHECKED BY CK
DATE 05/10/2018	JOB NO. SEDONA LAKES
DRAWING NO. E1.0	