

PAVEMENT NOTES:

- 5" THICK CONCRETE PAVING SHALL HAVE 3,500 PSI COMPRESSIVE STRENGTH AT 28 DAYS, AND REINFORCED WITH #4 BARS AT 24-INCHES ON CENTER EACH WAY. CONCRETE SHALL HAVE MINIMUM OF 500 PSI FLEXURAL STRENGTH AT 7 DAYS. REINFORCING STEEL SHOULD CONFORM TO ASTM A615, GRADE 60.
6" THICK CONCRETE PAVING SHALL HAVE 3,500 PSI COMPRESSIVE STRENGTH AT 28 DAYS, AND REINFORCED WITH #4 BARS AT 18-INCHES ON CENTER EACH WAY. CONCRETE SHALL HAVE MINIMUM OF 500 PSI FLEXURAL STRENGTH AT 7 DAYS. REINFORCING STEEL SHOULD CONFORM TO ASTM A615, GRADE 60.
7" THICK CONCRETE PAVING SHALL HAVE 3,500 PSI COMPRESSIVE STRENGTH AT 28 DAYS, AND REINFORCED WITH #4 BARS AT 18-INCHES ON CENTER EACH WAY. CONCRETE SHALL HAVE MINIMUM OF 500 PSI FLEXURAL STRENGTH AT 7 DAYS. REINFORCING STEEL SHOULD CONFORM TO ASTM A615, GRADE 60.
- SUBGRADE FOR CONCRETE PAVEMENT SHOULD BE STABILIZED WITH 7% LIME BY DRY WEIGHT PER TXDOT SPECIFICATION ITEM 260 AND 263, COMPACT TO 95% OF MAXIMUM STANDARD PROCTOR DENSITY (ASTM D 698) AT A MOISTURE CONTENT BETWEEN OPTIMUM AND +3% OF OPTIMUM. STABILIZED SUBGRADE SHALL BE 6-INCHES THICK FOR AREAS WITH 5" AND 6" THICK CONCRETE PAVEMENT. AREAS WITH 7" THICK CONCRETE PAVEMENT SHALL HAVE 8" THICK COMPACTED SUBGRADE.
- SUGGESTED LONGITUDINAL AND TRANSVERSE JOINT SPACING FOR CONCRETE PAVING PLACED ON EXPANSIVE FOUNDATION SOIL IS NOT TO EXCEED 20-FT. THE EXPANSION JOINT SPACING IS NOT TO EXCEED 60-FT.
- CONCRETE FOR 4" CONCRETE SIDEWALK SHALL HAVE 3,000 PSI COMPRESSIVE STRENGTH AT 28 DAYS, AND REINFORCED WITH #3 BARS AT 18-INCHES ON CENTER EACH WAY. INSTALL CONTROL JOINTS EVERY 5 FEET, EXPANSION JOINTS EVERY 20 FEET.
- PLACE 2" BANK SAND BELOW CONCRETE SIDEWALK
- PAVING CONTROL JOINT SPACING: MAXIMUM OF 15 FEET. IF SAWCUT, CONTROL JOINTS SHOULD BE CUT WITHIN 6 TO 12 HOURS OF CONCRETE PLACEMENT.
- CONTRACTOR SHOULD SUBMIT PAVING JOINT LAYOUT FOR REVIEW AND APPROVAL PRIOR TO CONSTRUCTION.
- CONCRETE SHALL BE PLACED IN ALTERNATE STRIPS WHERE APPLICABLE.
- FILL SHOULD BE BROUGHT ON SITE TO ACHIEVE PROPOSED GRADE ELEVATION. RANDOM FILL UNDER PARKING LOT PAVING MUST BE APPROVED BY PROJECT GEOTECHNICAL ENGINEER PRIOR TO BEING BROUGHT ONTO SITE.

NOTES:

- ALL DIMENSIONS ARE TO FACE OF CURB, FACE OF BUILDING, PROPERTY LINE, CENTER OR END OF STRIPPING, UNLESS OTHERWISE NOTED.
- SEE ARCHITECTURAL SITE PLAN FOR ADDITIONAL SITE DIMENSIONS, FEATURES, AND LANDSCAPING.

LEGEND

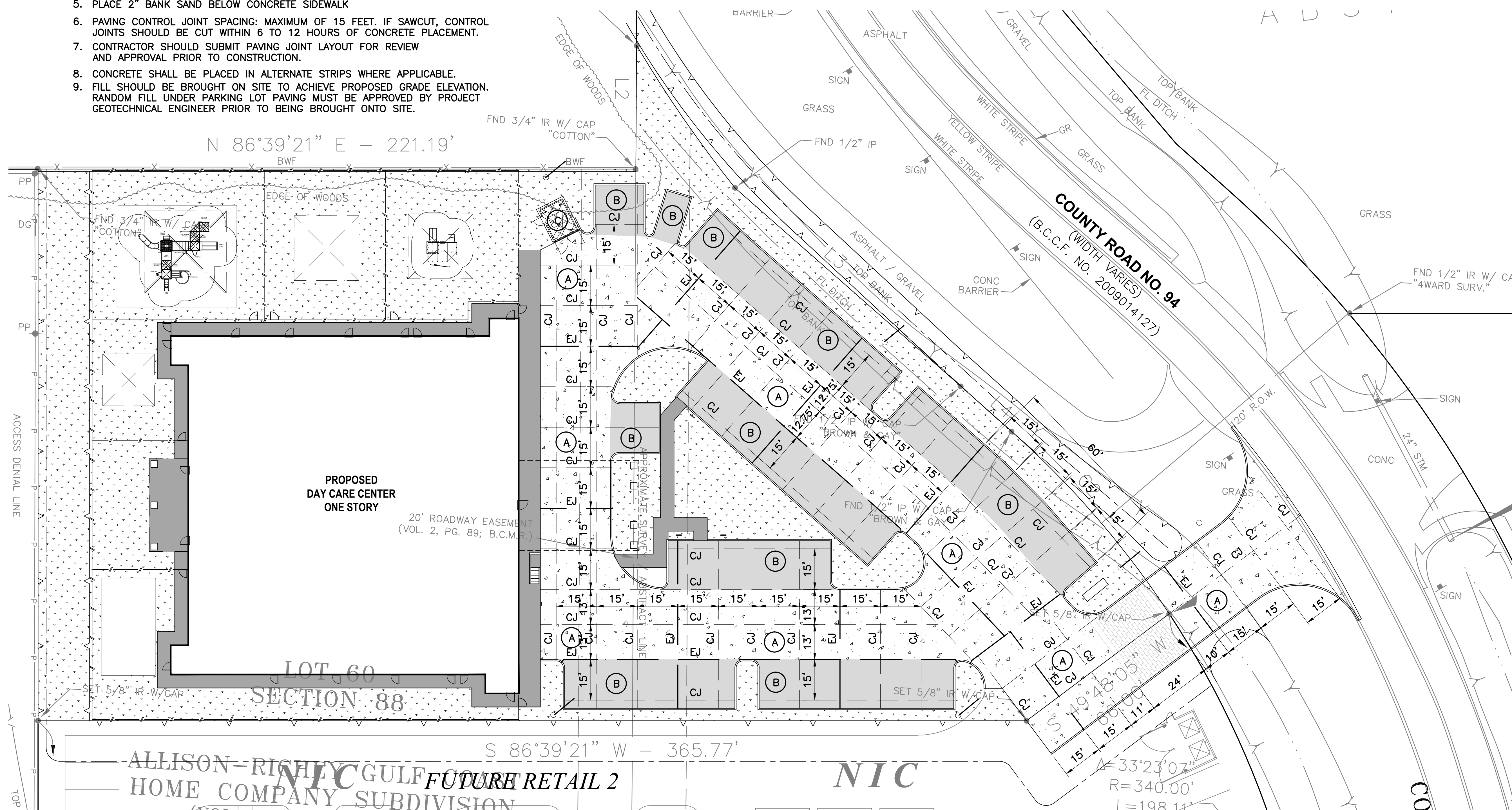
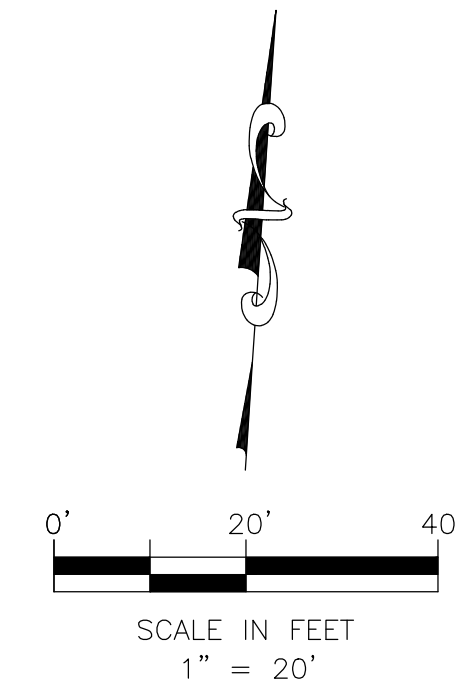
- CJ CONTRACTION/CONSTRUCTION JOINT KEYED
- EJ EXPANSION JOINT WITH DOWELS
- (A) PROPOSED MEDIUM DUTY CONCRETE PAVEMENT
- (B) PROPOSED LIGHT DUTY CONCRETE PAVEMENT
- (C) PROPOSED HEAVY DUTY CONCRETE PAVEMENT

BENCHMARK

MONUMENT NAME 10 GPS MONU 1995 IS A BRASS CAP SET IN CONCRETE STAMPED "CITY OF PEARLAND 10 GPS MONU, 1995" LOCATED ON THE SOUTH BOUND HIGHWAY 288 APPROXIMATELY 2,400 FEET SOUTH OF F.M. 518 AND 21 FEET WEST FROM THE WEST EDGE OF ASPHALT.
ELEV.=59.29' (NGVD 1929, 1987 ADJUSTMENT).

IBM A: BOX CUT ON H2-INLET LOCATED ON THE NORTH SIDE OF COUNTY ROAD 101 SOUTH OF THE SOUTHWEST CORNER OF THE PROPERTY, AS SHOWN. ELEVATION = 64.44'

IBM B: BOX CUT ON RCP LOCATED ON THE EAST SIDE OF COUNTY ROAD 94 NEAR THE EAST PORTION OF THE PROPERTY, AS SHOWN. ELEVATION = 61.48'



REVISIONS AND ISSUANCE		
NO.	DATE	DESCRIPTION
1	8/13/18	PRICING

IVY KIDS EARLY LEARNING CENTER
4434 CR 94
MANVEL, TEXAS 77578

MISSION ENGINEERING INC.
10370 RICHMOND AVE, #560
HOUSTON, TEXAS 77042
[T] 713-981-0018
[E] dzhuang@missioneng.com
TPEF Registration No. F-11771

interim review only
not for permit or
construction

YIFENG ZHUANG
TX # 87950

08/13/2018

DRAWING TITLE
**PAVEMENT JOINT
LAYOUT PLAN**

DRAWN BY KN	CHECKED BY EL
DATE 08/13/2018	JOB NO. 1806251

DRAWING NO.
C5